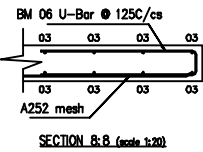


Copyright Freyssinet Ltd.  
 Figure dimensions only are to be taken from this drawing. All dimensions are to be checked on site before any work is put in hand. If in doubt, etc.

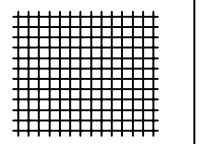
REINFORCEMENT NOTES

1. Cover to reinforcement UNO.

| ENVIRONMENT | COVER     |          |
|-------------|-----------|----------|
|             | MINIMUM   | EXTENDED |
| SLAB        | TOP 40    | 40       |
|             | BOTTOM 40 | 40       |
|             | SIDES 40  | 40       |



2. For concrete soffits details refer to Structural Engineer's drawings.
3. For reinforcement to holes, stairs, beams etc refer to Structural Engineer's drawings.
4. Refer to Bar Bending Schedule and PT drawing for typical end-bar details.
5. Reinforcement crossing restrictions are to be observed, not etc.
6. Reinforcing Mesh to be installed as instructed in Detail 1. Nesting of mesh to be avoided, not etc.
7. Reinforcing links to be installed in layers specified on the Slab Plan.
8. Minimum Reinforcement lap length to be 35 bar diameters.
9. See Bar Bending Schedule 102 for reinforcement details.
10. See Bar Bending Schedule 103 for punching shear reinforcement details.
11. See Drawing No. 103 for punching shear reinforcement details.
12. This drawing should be used in conjunction with Engineers and Architectural drawings.
13. Post-tensioning tendons take priority above reinforcement placement. If clashes occur consult Freyssinet engineer for instruction.



DETAIL 1  
 SCALE 1:20  
 LAPPING OF REINFORCING MESH TO BE ACCORDANCE WITH THE MINIMUM LAP LENGTHS ILLUSTRATED IN DETAIL 1. THIS APPLIES TO ALL MESH.  
 REINFORCING MESH SHALL BE LAPPED AT ALL JOINTS.  
 REINFORCEMENT LAP JOINTS MAY BE USED TO LAP MESH SHEETS IF PROVIDED HOWEVER THE MINIMUM REINFORCEMENT REQUIRED WILL BE SUPPLIED BY FREYSSINET IRELAND.

| PT | REVISION | FOR APPROVAL | BY | DATE | DESCRIPTION | DATE | SIGNATURE |
|----|----------|--------------|----|------|-------------|------|-----------|
|    |          |              |    |      |             |      |           |

FREYSSINET IRELAND  
 UNIT 40  
 17 BUSINESS PARK  
 MAZE  
 CO. DUBLINE  
 Telephone +353 (0)42844444  
 Fax +353 (0)42844444  
 E-mail info@freynet.ie

Project  
 BALLINCOLLIG TOWN CENTRE  
 BARRACKS SQUARE BUILDINGS  
 BUILDING 5J - CAR PARK

Des. Title  
 CAR PARK LEVELS 2 & 2A  
 RC DETAILS  
 SHEET 2 (OF 3)

Scale 1:100 Date Apr 2006  
 Copyright  
 Drawn by HMP Checked  
 Drawing Number 1002/05 - 102 Rev. P1  
 Status FOR APPROVAL

THIS SHOP DRAWING HAS BEEN PREPARED TO DRAWING:  
**3804-BBJ-02** REV 1

ISSUED FOR APPROVAL